



PIMPRI CHINCHWAD EDUCATION TRUST  
A Trusted Brand in Education Since 1992...

PCET'S  
**PBS** PUNE  
BUSINESS  
SCHOOL  
IGNITING MINDS

# Pimpri Chinchwad Education Trust's **PUNE BUSINESS SCHOOL**

(Approved by AICTE New Delhi)

DTE Code: 6974



TOP EMERGING<sup>1</sup> B-School in India  
Times Survey 2025



**Inspiring Minds  
Empowering Dreams**

# Scan to Connect With PBS

Website



Scan & Apply



Virtual Tour



Google Map Location



## SOCIAL MEDIA HANDLES

Instagram



Facebook



YouTube



LinkedIn



## OUR TRIBUTE



**Late. Shri. S. B. Patil**  
Founder Chairman  
Pimpri Chinchwad Education Trust



**Late. Smt. Lilatai Shankarrao Patil**  
Ex President,  
Pimpri Chinchwad Education Trust

## P.C.E.T. 's TRUSTEES



**Shri. D. P. Landge**  
Chairman



**Smt. Padmatai Bhosale**  
Vice Chairperson



**Shri. Vitthal S. Kalbhor**  
Secretary



**Shri. S. D. Garade**  
Treasurer



**Shri. Harshwardhan S. Patil**  
Trustee Member



**Shri. Narendra D. Landge**  
PCET Management Representative



**Shri. Ajinkya V. Kalbhor**  
PCET Management Representative



**Dr. Girish Desai**  
Executive Director  
PCET



**Dr. Ganesh Rao**  
DIRECTOR  
PUNE BUSINESS SCHOOL (PBS)



**Dr. Minakshi Tyagi**  
DEAN  
PUNE BUSINESS SCHOOL (PBS)

# INDEX

FOUNDER'S MESSAGE.....	02
LEGACY OF PCET.....	03
ABOUT PCET.....	04
ABOUT PBS.....	05
PGDM.....	10
PGDM COURSE CURRICULUM.....	21
PLACEMENTS AT PBS.....	26
ADMISSION PROCESS.....	29
Life at PBS.....	33
INDUSTRY VISIT.....	36
INFRASTRUCTURE .....	38
FUN FILLED EVENTS AT PBS .....	40
TEACHING FACULTY MEMBERS.....	45
TEAM @PBS.....	48





# A Tribute to Our Founder...

---

The Pimpri Chinchwad Education Trust (PCET) stands today as a living testament to the vision, courage, and compassion of Late Shri. Shankarrao Bajirao Patil, whose vision and dream took shape in 1990 and continues to guide us even after his heavenly departure. What he had started as a vision to cater to the longstanding need for accessible technical education in the heart of an industrial hub has now grown into a vibrant educational ecosystem, one that still reflects his values, his resolve, and his blessings.

Born into an agricultural family, Shri. Shankarrao Bajirao Patil carried with him an extraordinary dedication to public service. His life's work spanned education, social welfare, politics, and cooperative movements, touching countless lives across Maharashtra. Respected across the state, he went on to serve as the Minister for Labour, Gramin Vikas, Co-operation, Dairy Development, and Finance in the Maharashtra Government, and later as a Member of Parliament for two consecutive terms. Yet, amid all these towering responsibilities, education remained closest to his heart. It was his deep-rooted desire to empower the youth, especially those who could not access professional education due to financial constraints.

This led to the establishment of institutions under the PCET umbrella. Under his leadership and guidance, PCET set up Pimpri Chinchwad Polytechnic (PCP) in 1990 and, later, Pimpri Chinchwad College of Engineering (PCCOE) in 1999. These institutions soon earned a distinguished reputation for excellence in academics, discipline, sports, and industry connect. Inspired by his vision, PCET has continued to expand today, encompassing schools, management and computer institutions, research and incubation centers, state-of-the-art campuses, and the prestigious Pimpri Chinchwad University, along with emerging centres like the Pune Business School.

Even though he is no longer with us physically, his ideals remain the foundation of every corridor, every classroom, and every initiative at PCET. His blessings continue to guide our trustees, educators, students, and the entire PCET family as we carry his mission forward with pride and responsibility. This tribute is not merely a remembrance but is a reaffirmation that his vision continues to live and breathe through every milestone we achieve and every student we empower.

**Late Shri. Shankarrao Bajirao Patil**

**A visionary... A guiding light.... forever with us....**

# LEGACY OF PCET



[www.PCPolytechnic.com](http://www.PCPolytechnic.com)

**Pimpri Chinchwad Polytechnic (PCP)**



[www.PCCOE.pune.com](http://www.PCCOE.pune.com)

**Pimpri Chinchwad College of Engineering (PCCOE)**



[www.PCCOER.com](http://www.PCCOER.com)

**Pimpri Chinchwad College of Engineering and Research (PCCOER)**



[www.SBPatilArchitecture.com](http://www.SBPatilArchitecture.com)

**S B Patil College of Architecture & Design (SBPCOAD)**



[www.SBPatilCollege.com](http://www.SBPatilCollege.com)

**S B Patil College of Science & Commerce (SBPCSC)**



[www.SBPatilSchool.com](http://www.SBPatilSchool.com)

**S B Patil Public School (SBPPS)**



[www.SBPatilIMBA.com](http://www.SBPatilIMBA.com)

**S. B. Patil Institute of Management (SBPIM)**



[www.PuneBusinessSchool.com](http://www.PuneBusinessSchool.com)

**Pune Business School (PBS)**



[www.PCU.edu.in](http://www.PCU.edu.in)

**Pimpri Chinchwad University (PCU)**

**Institutes Under Management Support By Pimpri Chinchwad Education Trust (PCET)**



[www.NMIET.edu.in](http://www.NMIET.edu.in)

**Nutan Maharashtra Institute of Engineering and Technology (NMIET)**



[www.NCERpune.in](http://www.NCERpune.in)

**Nutan College of Engineering & Research (NCER)**

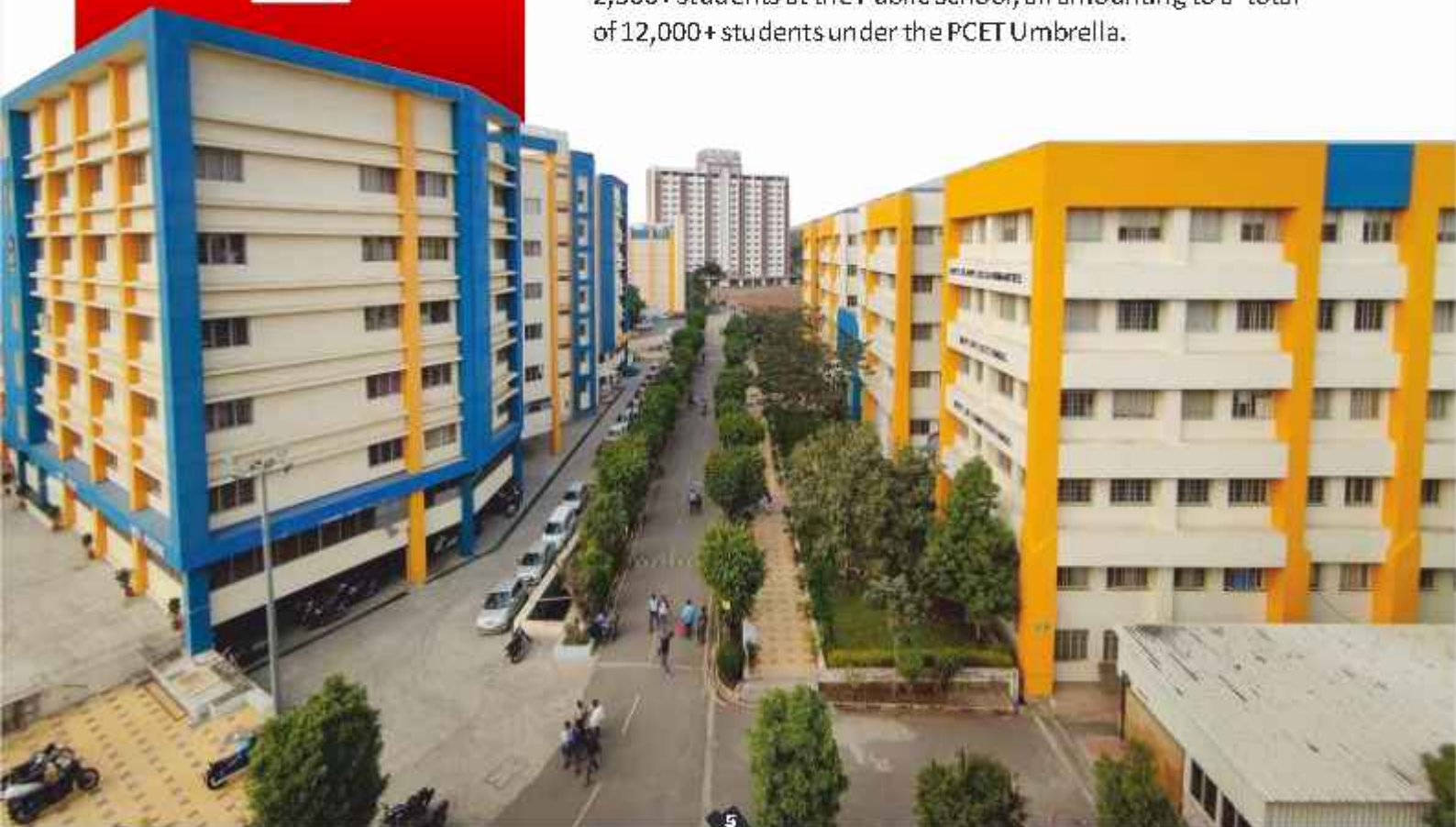
# PCET

## Pimpri Chinchwad Education Trust (PCET)

The Pimpri Chinchwad Education Trust (PCET) was established by Late Shri. S.B. Patil in the September of 1990. Its sole mission was to contribute to the society, the industry and community at large through value cultivating quality education in the field of primary to higher education, engineering, management, computer applications and research.

PCET has always been committed to its mission by creating, communicating, preserving and applying knowledge, art and academic values to garner socially sensitive yet industrially active citizens.

At the campus at Akurdi, Pune, 7500+ students are being groomed in specialised courses like Engineering, MBA, MCA, PGDM and Ph.D by professional and passionate instructors. The campus at Ravet, in addition to the campus at Akurdi, are home to 1,200 would-be graduates at the College of Engineering, around 800 pupils at the Junior College, and 2,500+ students at the Public School, all amounting to a total of 12,000+ students under the PCET Umbrella.



## ABOUT PBS

Pune Business School (PBS) is a forward-thinking academic institution known for its distinctive learning approach and global outlook. As an emerging leader in management education, research, and innovation in India, particularly in the Maharashtra region, PBS is committed to academic excellence and holistic student development.

To ensure an exceptional learning journey, PBS has crafted a dynamic and innovative student-focused plan that elevates every part of campus life, from academic support to modern facilities. Every interaction at PBS is designed to create a high-quality, engaging, and future-ready learning environment that helps students thrive. At PBS, students receive more than just education. We provide comfortable residential options, vibrant social spaces, and dedicated support services that make campus life enriching and stress-free. Our focus on personal growth, mentorship, and real-world exposure empowers students to build confidence, sharpen their skills, and unlock exciting career opportunities. With PBS, students step into a nurturing ecosystem designed to shape them into successful, industry-ready professionals.



### VISION

Pune Business School is a confluence of world-class educational experiences that nurture lifelong learners and socially conscious managers and entrepreneurs through an integration of collaborative knowledge and professional skills within a sustainable environment that fosters research and serves the needs of the global community.



### MISSION

To create dynamic industry ready managers and entrepreneurs who are socially sensitive, ethical and harbingers of change equipped with a right blend of knowledge, skills and attitude.





# Executive Director's MESSAGE

---

**Dr. Girish Desai**

Executive Director,  
Pimpri Chinchwad Education Trust (PCET)

Corporate India is on continuous lookout for skilled management professionals who would accept challenges in an ever changing economic environment. Holistic management education in our country continues to be a necessity for nation building. Therefore, it's essential for Management Institutes to deliver such holistic, industry oriented, comprehensive and quality education to create the leaders of tomorrow.

Pune Business School under the Pimpri Chinchwad Educational Trust (PCET) works towards developing leaders, managers, and entrepreneurs of the future.

The lush green sprawling campus, sacred ambience with world class infrastructure of our campus invites you to most unique experience of quality learning in a multi-dimensional and participatory manner. The students are exposed to the best training and academics in different sub functions management including niche domains like Pharma Business Management, Agri Business Management in addition to vanilla and generic specializations like Marketing, HR, Finance, OSCM etc.

PGDM Students will gain live-project exposure and deep industry interactions through the latest pedagogy keeping itself at par with industry requirements. Numerous industry-academia interactions will definitely enrich the unique PGDM program.

Taught by rich experienced faculty drawn from various leading industry and academia Intuitions, the students would march into making the dream of Corporate India, a reality.



# Director's MESSAGE

**Dr. Ganesh Rao**

Director, Pune Business School (PBS)  
Regional Vice President - West India AIMS

Today, Corporate India is transforming at an unprecedented pace. Global disruptions and technological breakthroughs have pushed businesses into a new era of reinvention. Industries are being reshaped by digital ecosystems, immersive customer experiences, and data-driven decision-making. As enterprises adopt AI, AR/VR, fintech, health-tech, people analytics, and meta-marketing strategies, the demand for agile, tech-savvy managerial talent has never been greater.

This evolution calls for a bold redefinition of management education. At Pune Business School, we have re-engineered our academic approach to prepare students for this dynamic landscape. Our programs equip learners with cutting-edge knowledge, future-ready skills, and the mindset required to excel in the next wave of corporate innovation.

Introducing the Centre for Business Excellence, a dedicated hub that integrates modern business practices such as immersive marketing, predictive analytics, digital transformation, and human-centric design. Through real-world simulations, industry collaborations, and strategic exposure to emerging technologies, we aim to develop leaders who can navigate complexity and create meaningful impact.

In today's competitive environment, enterprises need visionary, enterprising managers. At PBS, we nurture that entrepreneurial edge. Our curriculum blends practical learning, design thinking, and cross-disciplinary insights to shape professionals who can innovate, adapt, and lead.

Yet, amidst this modern transformation, our foundation remains rooted in strong values. Despite embracing innovation at every step, we ensure that every industry leader emerging from PBS carries deep social sensitivity, ethical responsibility, and the timeless values of the PCET legacy. This balance of technological excellence and human-centered impact is what truly sets our graduates apart.

I welcome you all to the new age of management education at Pune Business School where your will ambitions will find a platform to skyrocket and touch the sky.

# Dean MESSAGE

**Dr. Minakshi Tyagi**

Dean, Pune Business School (PBS)

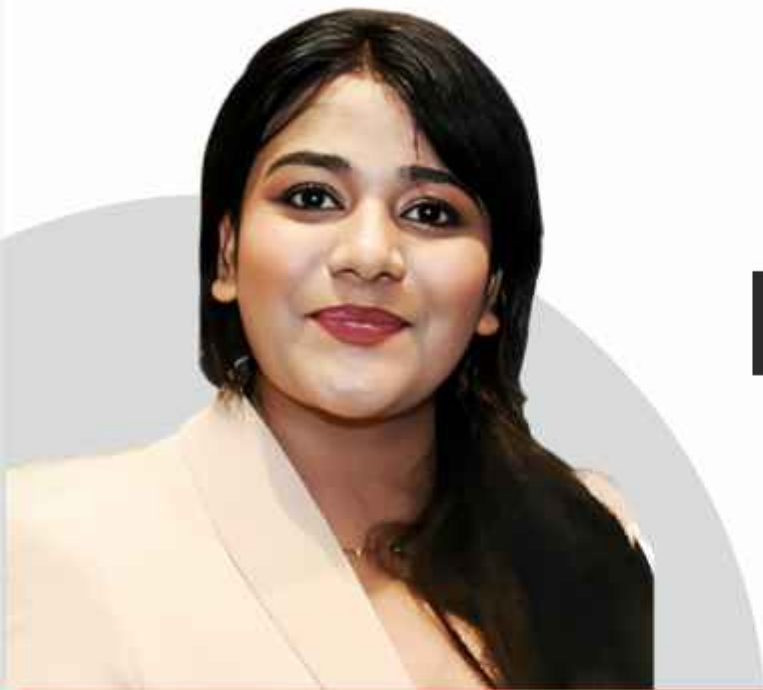


At PBS, we are dedicated to creating an environment where students receive a world-class education while engaging in meaningful experiences that promote growth, leadership, and lifelong learning. Our faculty comprises distinguished experts, passionate mentors, and committed researchers who are here to guide you throughout your journey. We believe in challenging our students to think critically, engage deeply with their disciplines, and prepare for a constantly evolving world.

In addition to our classroom offerings, our college provides a broad range of opportunities for personal and professional development. From internships and research projects to various clubs, organizations, and community outreach programs, you will find ample resources to help you develop as a scholar, leader, and individual. At Pune Business School, you will belong to a close-knit community that values inclusivity, innovation, and ideas.

As you contemplate your future, please know that Pune Business School is more than just an institution for study; it is a place to forge lasting connections, explore your passions, and shape the future you envision. We are here to support you, celebrate your achievements, and assist you in navigating the exciting challenges of higher education.

Wishing all my students success, growth, and a future filled with purpose. The world needs leaders who can think beyond boundaries, and I do not doubt that each PBS student will rise to the challenge.



**TPO-Corporate Relations**  
**General Business Management**  
**MESSAGE**

---

**Ms. Shruti Tyagi**

Head - Corporate Relations  
General Business Management

At the Training and Placement Cell, our core focus is to nurture industry-ready management professionals. We work relentlessly to groom our students through corporate-oriented learning, ensuring they develop the skills, confidence, and exposure required to excel across diverse business domains.

Our programs in General Business Management covering HR, Marketing, Finance, Operations & Supply Chain Management, and Pharmaceutical Management-prepare students with strong functional knowledge, practical understanding, and professional competencies.

We cater to students' aspirations by providing ample opportunities for placements, Internship, industry interactions & Our commitment is to empower every student to explore, grow, and achieve their career goals with clarity and confidence.



# TPO-Corporate Relations Agri Business Management MESSAGE

## Sagar Lokhande

Head - Corporate Relations  
Agri Business Management



Dear Future Agri Leaders,

Indian agriculture is evolving rapidly with agri-tech, sustainability, and digital innovation. In this transformation, PGDM Agri Business students play a pivotal role in connecting modern technology with real farming needs and driving impact across the agriculture value chain.

From agri-inputs and food processing to supply chain, finance, and rural development, the opportunities today are vast. AI-driven crop insights, drones, IoT sensors, climate-smart models, and digital agriculture platforms are redefining how India grows and delivers food.

At Pune Business School, we prepare you to lead this change through practical learning, industry exposure, and a strong foundation in sustainable practices. And while you embrace modern tools, you also carry forward the PCET legacy of values and social responsibility. Join us at PBS where your talent becomes a force for national transformation.



Approved

# POST GRADUATE DIPLOMA IN MANAGEMENT



## ABOUT THE PROGRAM

The flagship **Post Graduate Diploma in Management (PGDM)** Program at PBS is designed, keeping in mind the immersive environment originating from blending traditional value-based MBA education on one hand and an industry-relevant, fast-paced curriculum on the other. It aims to develop well-rounded management professionals who can think critically, adapt quickly, and lead effectively in dynamic business ecosystems. The program ensures that students not only gain conceptual clarity and ethical grounding, but also acquire hands-on exposure through experiential learning, industry interactions, and real-world problem-solving.

### Access to Experts/Networks

Access to faculty and recognised experts from Academia and Industry who are regularly invited for training sessions, guest lectures, seminars and Workshops, to speak about the current trends in the corporate world. Strong backing from over 250+ guest lecturers over the two-year program, facilitating our students to establish strong networks with industry experts.

### A Culture of Collaboration

Deepening a sense of collaborative culture, encouraging teamwork and creating lifetime relationships among the students through Field Trips, Mentorship Activities, Group Projects, Students Clubs & Committees, Outdoor Excursions, Cultural Extravaganza, ensure a collaborative culture encouraging teamwork which deepens relationships among students, that lasts a lifetime.

### Global Orientation Through Intellectual Capital

Our highly experienced faculty members focus on training, keeping in mind the international perspective of management in order to enable students to rise through the challenges of operating in a global world.

### A Personalised Experience

A notably smaller batch size compared to various B-schools, gives us an edge over others since we render individualised attention, shaping students for global pre-requisites and standards, enriching student teacher interactions.

### Performance Upgradation Socially Relevant Holistic Program (PUSH)

A Uniquely designed program focusing on Leadership, communication skills, emotional intelligence and the latest managerial trends.

### Entrepreneurial Inspiration & Innovation

Connecting entrepreneurs, tips to explore a potential new venture and initiating the launch of students' ventures in our incubation cell.

### A Strong Alumni Network

Strong connections with the alumni, relentless and unending support from them in every step. The advisory of board of PBS consists of alumni members of PCET.

### Personality Enrichment Program

An exclusive program that focuses on decision making in the face of conflicting situations and intense pressure, logical reasoning, aptitude, general knowledge and research skills of students.

## Specializations in PGDM



**Marketing  
Management**



**Financial  
Management**



**Human Resource  
Management**



**Agri Business  
Management**



**Operations &  
Supply Chain Management**



**Pharmaceutical and  
Healthcare Management**

### Post Graduate Diploma in Management (PGDM)

- AICTE Approved
- Intake: 120
- Duration : 2 Years



# MARKETING MANAGEMENT

Are you looking at making a career in marketing and business? Would you like to study real-world business challenges to prepare you better for a career in the field of Marketing? The Post Graduate Diploma in Management (PCOM) with Marketing Specialization at Pure Business Schools designed to prepare you for leadership roles in the Marketing sector.

## Why Study PGDM in Marketing...

Marketing is one of the diverse business fields with endless career options. Almost every major company has an inhouse marketing team and many boutique marketing agencies around the world. Technological advances, a dynamic environment, and ever-changing customer requirements have led to a great increase in the demand for marketing graduates. Job opportunities are abundant in this field, both locally and overseas including advertising, retail, market research, public relations, sales and management.

### Diverse Career Options

After completing PGDM in Marketing, the candidates come across a plethora of opportunities such as Market Research Analyst, Brand Manager, Sales Manager, Product Manager, etc. Candidates get to develop new and improved marketing skills that help in the growth of one's own business too.

### In-Demand with Good Remuneration

Since marketing roles play such an important role in most companies, there will always be a demand for marketing jobs. This means that doing a PGDM course in this area will help you acquire skills and know-how for a career that takes up a significant share of the job market. The marketing field is a very lucrative field and based on experience, skills, location, company, etc., candidates can bag good salary packages.

### Overall Development

Marketing has a corner for all skills which includes creativity, communication, research, and management. This course seeks to improve students' analytic and strategic abilities so that they may learn to adapt to a continuously changing environment, incorporating both tradition and creativity in terms of media, channels, or market research.

## Course Highlights

- 01 Industry-focused curriculum designed for high-growth marketing careers
- 02 Expert faculty with strong industry and global experience
- 03 Syllabus aligned with latest business trends and corporate needs
- 04 Covers key areas: Advertising, Branding, Market Research, Global & B2B Marketing
- 05 Regular guest sessions by industry leaders
- 06 Real-world exposure through industry visits
- 07 Hands-on learning via internships across multiple sectors

# FINANCIAL MANAGEMENT

The PBS PGDM in Finance will enable the students to advance in the management sector with finance innovation and its applications in the fields of banking, finance, and insurance. Students will gain the ability to draft, strategize and develop disruptive financial innovations using appropriate tools and techniques, and hypothesize the impact of new regulations on future commerce products. The program enables students to have an in-depth understanding of the future of money, markets, and transactions, as well as the mental tools and framework needed to predict and take advantage of future trends in finance.

The Course Contents for the Finance program are designed by the expert faculty who have vast experience and international exposure in different countries related to Finance.

The course design is based on the latest trends in business and what the corporate sector expects from our students.

The syllabus are framed semester-wise starting from the basics of Accounting to the advanced stages in Finance in the entire PGDM (Finance specialization).

In every area of finance - payments, expanding business, currency, lending, money management, accounting and insurance - technological innovations are accelerating processes, expanding access to more people, and creating new possibilities for business growth and value creation are opening. The program will cover all the innovations that are central to finance such as block chain, digital advisory, trading systems, design thinking, artificial intelligence and machine learning, peer-to-peer lending, equity crowd funding and mobile payment systems.



## TEACHING METHODOLOGY

The entire syllabus is taught keeping in mind the practical aspects of the subject and its application in real life situations, and decision making. Ample examples and industry case studies are dealt with in the classroom to help students develop out-of-the-box thinking and make them research-oriented. PETS, explanations, hand-outs, homework assignments and class tests are given in addition to asking the students to solve problems on their own in the class so that they can compare skills with the peer group in the class or knowledge. This method helps the students to develop self-reliance in continuity.

## How does it meet the Contemporary demands & employment opportunities

The program is designed to formalize participants with the ability to identify disruption opportunities in the financial services sector and empower them to initiate new finance ventures and develop that idea into a better financial services firm and Uses new technology to develop which enables usage.

## Why Finance...



## Career Opportunities



# HUMAN RESOURCE MANAGEMENT

## Why HR at PBS

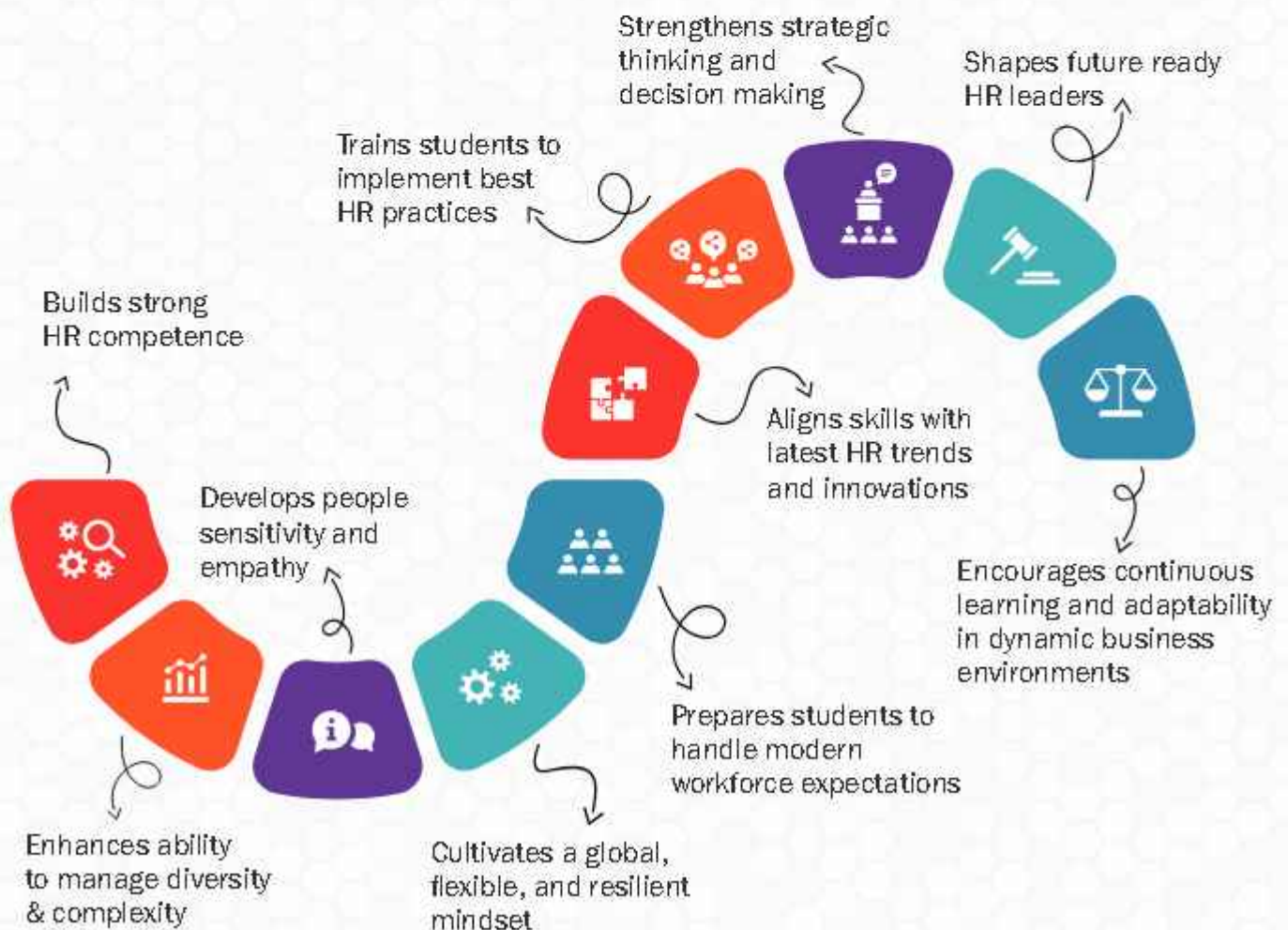
PBS has excellent HR specialists and professionals who have prepared the HR leaders of the future. PBS is focused to train the HR of the future with the latest and relevant industry needs and customized HR curriculum. The objective of the program is to provide basic and advanced knowledge of human resources and integration with technology platforms.

Whether you are looking to advance in your career or start your own business, PBS is one of the best PGDM institutes in the region to help you hone your leadership skills and provide you with practical skills.

## Pedagogy

Pedagogy is developed after incorporating ideas and suggestions from HR leaders. The objective of the program is to impart basic and advanced knowledge of HR. The program is also extremely useful for students who intend to join organizations and work in specialized HR functions or wish to upgrade their existing skills and knowledge of contemporary HR processes and practices.

## How It Addresses Transferable Skills



# OPERATIONS & SUPPLY CHAIN MANAGEMENT

Empowering Future-Ready Leaders in Logistics, Strategy & Innovation

The PGDM in Operations & Supply Chain Management at Pune Business School (PBS) is designed to create agile leaders who can streamline operations, optimize resources, and build resilient supply networks. The program blends strategic thinking, data-driven decision-making, and real-world problem-solving to meet the dynamic demands of global business environments.

## Why Choose PBS?

- **Industry-Aligned Curriculum** - Updated with the latest trends in logistics, ERP, & sustainable operations
- **Practical Learning**- Live projects, industrial visits, and case-based pedagogy
- **Tech-Driven Focus** - Exposure to AI, Data Analytics & Digital Supply Chain tools
- **Global Perspective** - Expert sessions with industry leaders and global collaborations
- **Career Support** - Strong placement network across manufacturing, retail, and e-commerce sectors.



## Key Learning Outcomes

- Supply Chain Strategy & Network Design
- Lean Operations & Quality Management
- Inventory, Procurement & Logistics Optimization
- ERP & SCM Software Proficiency
- Sustainability & Green Supply Chain Practices

**The PBS Edge** - Through real-world projects, industrial visits, and hands-on learning, PBS shapes efficient, analytical, and innovation-driven professionals ready for global operations excellence.

# PHARMACEUTICAL & HEALTHCARE MANAGEMENT

Transforming Healthcare Leaders for a Healthier Tomorrow

The PGDM in Pharmaceutical & Healthcare Management at Pune Business School (PBS) is designed to develop future-ready professionals who can navigate the rapidly evolving global healthcare and pharmaceutical industries. The program integrates management principles with healthcare innovation, regulatory knowledge, and strategic leadership to create experts capable of managing hospitals, pharma operations, and healthcare services efficiently.

## Why Choose PBS?

- **Industry-Centric Curriculum** — Designed with inputs from leading pharma & healthcare professionals
- **Integrated Learning** — Combines business management with pharmaceutical, clinical, and hospital insights
- **Global Exposure** — Guest sessions and workshops with international healthcare experts
- **Practical Experience** — Live projects, industrial visits & internships in pharma and hospital sectors
- **Career Advancement** — Strong placement network in healthcare, pharma, and biotech industries



## Key Learning Outcomes

- Healthcare Operations & Quality Management
- Pharmaceutical Marketing & Brand Management
- Health Economics & Policy
- Regulatory Compliance & Ethics
- Digital Health & Hospital Information Systems

**The PBS Edge** - PBS nurtures leaders who combine scientific understanding with strategic thinking, preparing students for a future where business meets wellbeing.

## General Business Management Division – PGDM

The GBM Division at Pune Business School builds agile, industry-ready managers through a balanced mix of business fundamentals, real-world projects, and future-focused skill development. Students gain broad functional exposure and sharpen leadership, communication, and analytical abilities through experiential learning and PBS's signature development initiatives. The result: graduates prepared for cross-functional roles, fast-growing careers, and entrepreneurial opportunities in today's competitive business landscape.

### Why Pune Business School's PGDM Stands Out

#### Industry-Driven Curriculum

PBS offers an AICTE approved PGDM program designed with strong industry alignment, ensuring students gain relevant skills for real business challenges.



#### Balanced Learning Approach

PBS blends academic excellence with extracurricular involvement, nurturing well rounded professionals who can in leadership roles or entrepreneurial ventures.

### At PBS Pune, you don't just earn a PGDM—you build a career.

Through experiential learning, leadership development, and a supportive campus culture, PBS shapes future managers who are confident, competitive, and ready to succeed in any industry.

After the foundational year, GBM (or generalist PGDM) continues with a broad coverage of all crucial business domains rather than a narrow specialization immediately giving a holistic management perspective. Common subject-areas/modules typically include:

- **Financial Management & Analysis** - including corporate finance, working capital, capital budgeting, financing decisions.
- **Marketing Management (advanced)** - consumer behaviour, brand & product management, promotion & distribution strategies, market research.
- **Operations & Supply Chain Management** - production/operations planning, supply-chain fundamentals, process management, operations research / operations analytics.
- **Human Resource Management** - HR fundamentals, organizational development, performance management, compensation, labour laws, employee relations.
- **Business Analytics / Management Information Systems / Data-Driven Decision Making / IT-enabled Management Tools** - as organisations rely more on data & analytics.
- **Research Methodology / Strategic Management / Business Policy / Corporate Governance / Business Ethics** - to build strategic thinking, ethical management, macro-business awareness, governance.
- **Entrepreneurship / Innovation / Business Ventures / New-Business Management (in some PGDM curricula)** - for students interested in start-ups or business creation.

### Additionally typical supporting elements across semesters:

- **Soft-skills training:** communication, presentation, leadership, teamwork, reasoning, case-studies.
- Live projects, industry visits, internships - to get real-world exposure and apply classroom knowledge.
- Option to explore electives / broad spectrum of business domains before final specialization, giving flexibility in career orientation.

## Job Opportunities After PGDM – General Business Management (GBM)

### Marketing & Sales Roles



### Finance & Banking Roles



## Human Resource Management Roles

- 01 HR Generalist
- 02 Talent Acquisition Executive
- 03 Employee Engagement Coordinator
- 04 Training & Development Executive
- 05 HR Operations / Payroll Assistant
- 06 HR Business Partner (Junior Roles)
- 07 Compensation & Benefits Coordinator

## Operations & Supply Chain Roles

- 01 Operations Executive
- 02 Procurement / Purchase Executive
- 03 Supply Chain & Logistics Coordinator
- 04 Inventory & Warehouse Supervisor
- 05 Vendor Management Executive

## General Management & Administration Roles

- 01 Management Trainee - General Management
- 02 Admin & Facility Coordinator
- 03 Corporate Strategy Assistant
- 04 Business Operations Executive
- 05 Executive Assistant to Senior Management
- 06 Project Coordinator / Project Management Trainee

## Consulting & Advisory Roles

- 01 Junior Consultant
- 02 Process Analyst
- 03 Market/Business Research Analyst
- 04 Strategy Support Executive



## AGRIBUSINESS MANAGEMENT

Agriculture was predominant in the lives of we Indians since ages. In fact, the culture of India is known to be **कृषिप्रधान**. For some years Agriculture had taken a backseat in the economy of India, but since last decade again the agriculture has progressed enormously. Various businesses associated with agriculture have bloomed e.g. processed food, edible oil, Cotton industry etc. India is one of the major players in the agriculture sector worldwide. India has the world's largest cattle herd (buffaloes), largest area planted of wheat, rice, and cotton, and is the largest producer of milk, pulses, and spices in the world. The Indian food industry is poised for major growth, and has immense potential for value addition within the food processing industry. The Indian food and grocery market is the sixth largest in the world, with retail accounting for 70% of sales. The agriculture sector in India is expected to generate better momentum over the next few years due to increased investment in agricultural infrastructure such as irrigation facilities, storages and cold storages. Rising income levels in rural and urban areas, have contributed to the increase in demand for agricultural products across the country. The scope of businesses related to agriculture is phenomenal.

### AGRI-BUSINESS MANAGEMENT @PBS

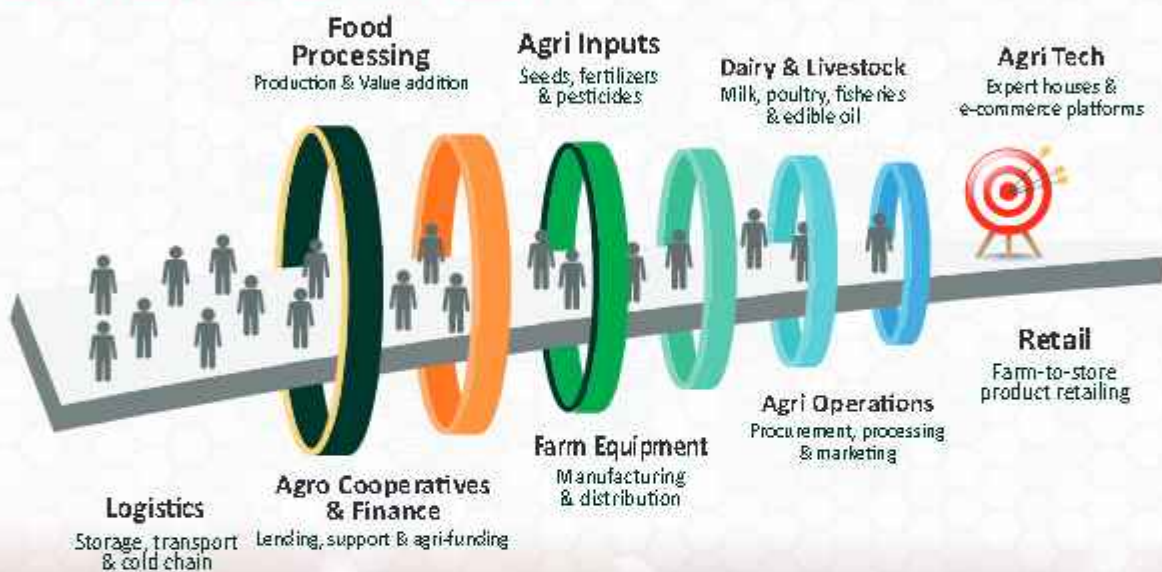
A career in agribusiness can open doors to a plenty of industries such as commodity procurement and marketing, import export firms, public and private enterprises, retail marketing, agro-financial services, farming industry, food production companies, packaging and other allied sectors with the use of the advanced technology. Agriculture business as an industry has opened up vast opportunities for professionally skilled and qualified managers.



## SALIENT FEATURES

- The core curriculum involves the study of marketing along with food and agriculture markets that are designed to build and enhance the managerial capabilities.
- The programme is planned by keeping the latest industry trends and requirements in mind and to enhance students' knowledge, skills and perspective necessary for management, leadership and decision-making in agri-business and allied sectors.
- Industry visits, value added certifications, training programs and opportunity to learn from the best in academia industry.
- The curriculum comprises of three elements: Core management program, Agriculture related inputs, and elective specialization.

## CAREERS IN AGRI-BUSINESS MANAGEMENT



# PGDM COURSE CURRICULUM

## First Year PGDM

During the first year of the Post Graduate Diploma in Management program, the student is grounded in core Management. The courses provide a solid foundation in the management discipline which will lead the student towards his areas of specialization.

### Semester - I

Managerial Accounting  
Economic Analysis for Business Decision  
Organizational Behaviour  
Legal Aspects of Business  
Marketing Management  
Business Statistics  
Digital Business  
Introduction to ABM

### Enrichment Course

Business Communication - I  
Enterprise Analysis & Desk Research

### Employability Course

Aptitude Training  
Personality Enrichment Lab - GD, PI & Presentation Skills

### Certifications

MS Excel Level - I  
Foreign Language – I (Japanese)

### Foundation Course Mandatory

Cyber Security - I  
Human Rights - I



## Semester - II

- Human Resource Management**
- Financial Management**
- Advanced Marketing Management**
- Research Methodology**

<b>Specialization Core - GBM</b>	<b>Agri Business Management</b>
Basics of Power BI	Agri - Rural Marketing
<b>Marketing Management</b>	Management of Agri Business Co-operatives
Consumer Behaviour	Agri - Import & Export Management
Digital Marketing - I	<b>Employability Course</b>
<b>Human Resource Management</b>	Aptitude & Reasoning Training
Recruitment, Selection & Training	<b>Certifications Course</b>
Employee Relations & Labour law	Advanced Excel Level - II
<b>Financial Management</b>	Foreign Language – II (Japanese)
Security Analysis & Portfolio Management	<b>Foundation Course Mandatory</b>
Equity Research	Cyber Security II
<b>Operation &amp; Supply Chain Management</b>	Human Rights II
Service Operations Management	
Supply Chain Management	



## Semester - III

- Strategic Management
- Project Management
- Summer Internship Program

<b>Specialization Core - GBM Marketing Management</b>	<b>Operation &amp; Supply Chain Management</b>
Service Marketing	Production & Operations Management
Marketing Research	Logistics Management
Digital Marketing II	Material & Stores Management
Integrated Marketing Communications	Operations Research
B2B Marketing	Global Supply Chain Management
<b>Human Resource Management</b>	<b>Agri Business Management</b>
Strategic HRM	Agri Food & Retail Management
HR Operations	Agriculture Finance & Rural Credit
Industrial & Commercial Law	Marketing of Retails Agri Inputs
Labour Welfare	Post-Harvest Production Management
Conflict & Negotiation Management	Livestock Management
<b>Financial Management</b>	<b>Enrichment Course</b>
Financial Services	Advanced Power BI
Direct Taxation	<b>Employability Course</b>
Financial Modeling	Aptitude & Reasoning Training
Introduction to Banking	Personality Enrichment Lab - GD, PI & Presentation Skills
Advanced Financial Management	<b>Foundation Course Mandatory</b>
	Cyber Security III



## Semester - IV

- International Business Management
- Current Trends in Management
- Business Ethics & Corporate Governance

<b>Specialization Core - GBM</b>	<b>Operation &amp; Supply Chain Management</b>
<b>Marketing Management</b>	Project Management in Supply Chain Operations
International Marketing	Procurement and Quality Management
Customer Relationship Management	Manufacturing Resource Planning
Tourism & Hospitality Marketing	<b>Agri Business Management</b>
<b>Human Resource Management</b>	Agri Logistics and Supply Chain Management
Human Resource Planning	Farm Business Management
Leadership Skills & Change Management	Feed Business Management
Compensation and Reward Management	<b>Enrichment Course</b>
<b>Financial Management</b>	Data Visualization with Tableau
Decision Making in FM	<b>Employability Course</b>
Investment Banking	Aptitude & Reasoning Training
Behavioural Finance	<b>Foundation Course Mandatory</b>
<b>Pharmaceutical &amp; Healthcare Mgmt.</b>	Cyber Security - IV
Pharma Entrepreneurship	
Healthcare In India	
Logistics for Healthcare & Pharma Services	

## Certifications Courses

- Digital Marketing 2 Certifications (Career Minds)
- Practical Aspect of HR 2 Certification (PACE Career Academy)
- Logistics & Supply Chain Management 2 Certification (OM Logistics)
- Tableau & Power BI training (EduPlus Now)
- Pharma & Healthcare Management 7 Certification (SNOW)
- 6. NISM training Module 5th, 8th, 10th-A & 15 (Market Insights)
- Certified Seed Learner Training program (Seed Works International)
- Business Development Skills (SIILC)
- Vertical Farming training program (Globe Florex)
- Master In Rural Banking (SIILC)
- Business Development Skills-Based on agri Input Industry (SIILC)
- Six Sigma Green Belt for OSCM (Infostar Business Solutions)
- Talent Acquisition
- Compliances & Benefit
- SAP HR Payroll Processing
- HR Analytics
- Digital Marketing
- Web Designing
- SEO/SMD
- Google Ads
- Lead Generation
- Content Writing
- NISM 5 A
- NISM B
- NISM 10 A & 15
- Financial Modeling
- Valuation Analyst
- Power BI
- Advance Excel
- Investment
- Financial Risk Management (FRM) certification
- SAP-FICO (Financial Accounting and controlling)
- Project Management in Pharma
- Creativity & Entrepreneurship in Pharma
- R & D and Innovation in Pharma
- Disaster Management in Pharmaceuticals
- Quality Management in Pharmaceutical Operations
- International Business in Pharmaceuticals
- Pharmaceutical Brand Management
- IPR Management in Pharma
- Strategic Management in Pharmaceuticals

# NATIONAL & INTERNATIONAL Academic Partnership

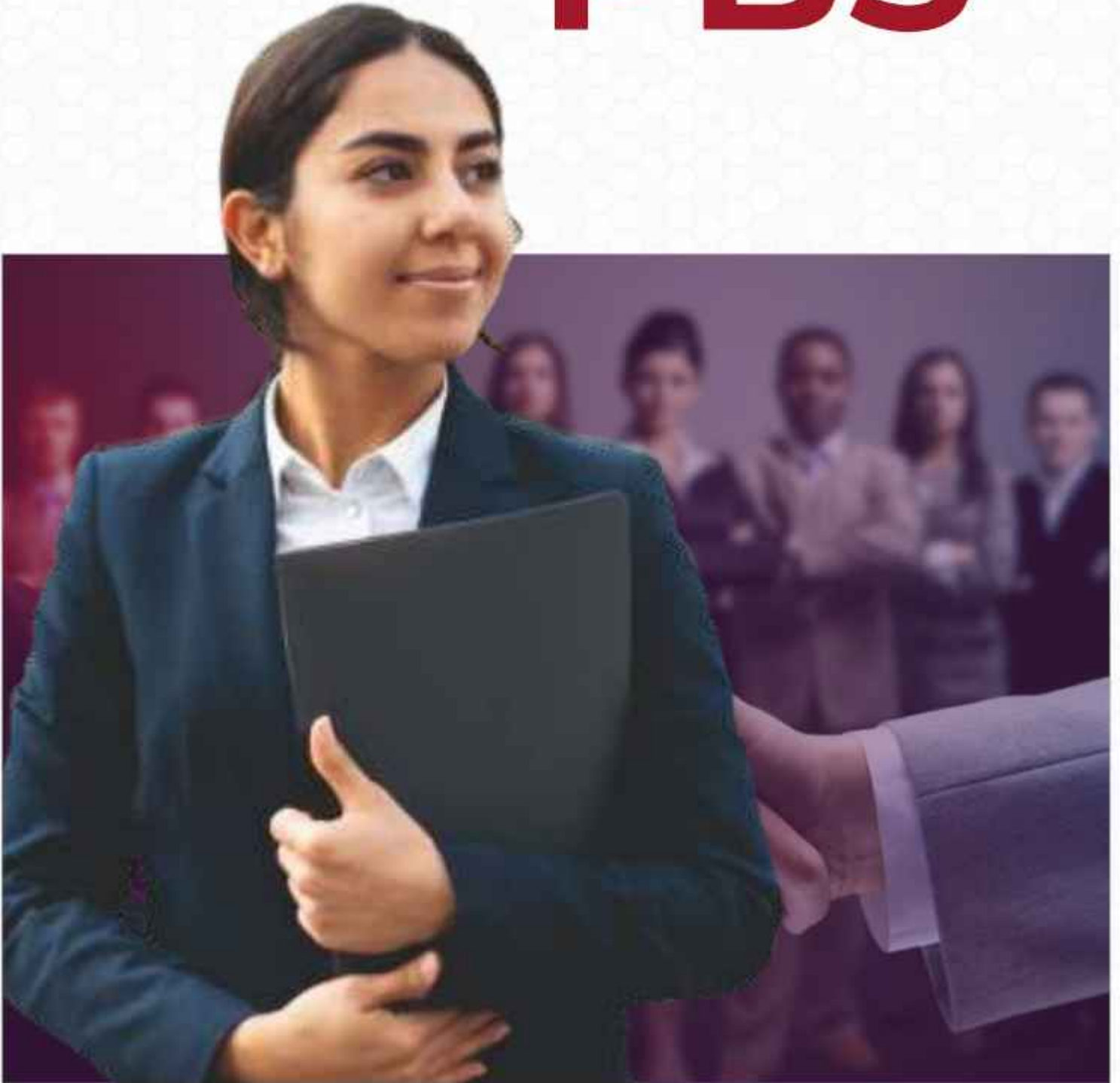


## Academic Collaborations



**PLACEMENTS AT**

**PBS**



## Strong Industry Connect of PCET

**26,500**  
Placements

**500+**  
Recruiters

**50,000+**  
Alumni

**450+**  
Patents

## CORPORATE PARTNERS



# Corporate Interaction & Placement Highlights

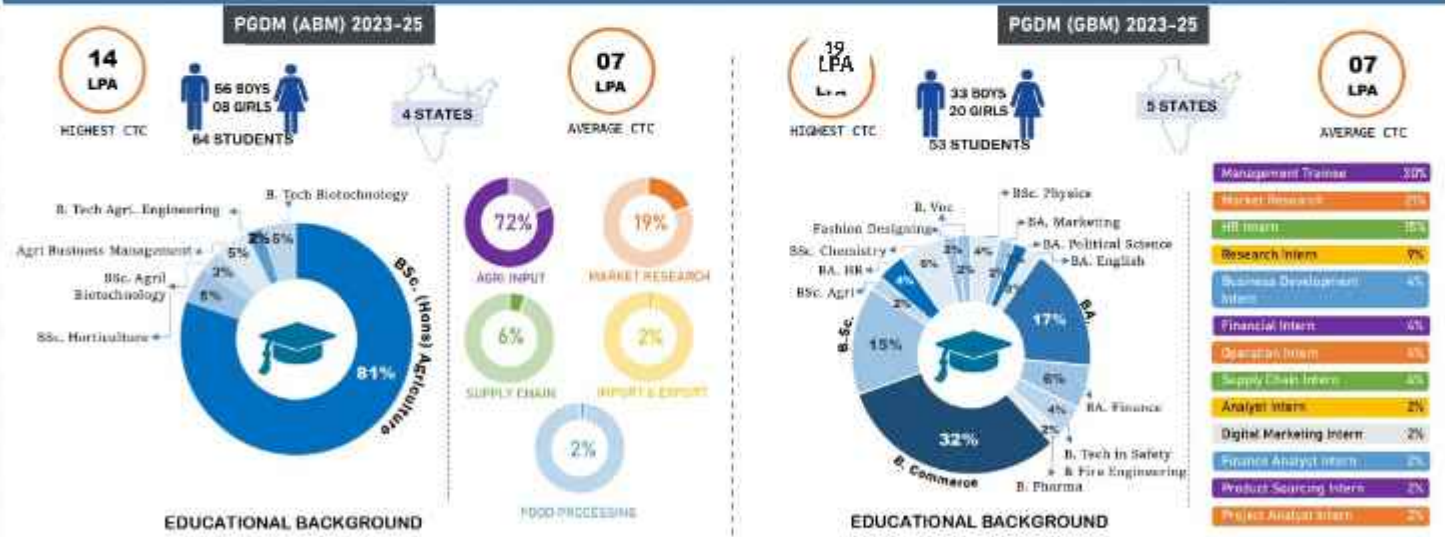
Our institute maintains a strong industry connect through regular corporate interactions, expert talks, panel discussions, and live projects that expose students to real business scenarios and current market trends. This continuous engagement with industry leaders helps shape students into confident, industry-ready professionals. Supported by a dedicated Corporate Relations & Placement Team, students receive comprehensive training through aptitude sessions, mock interviews, communication grooming, and mentoring. As a result, our students consistently secure internships and placements across top companies in BFSI, Consulting, FMCG, Pharma, Technology, and other emerging sectors.

## Placement Highlights



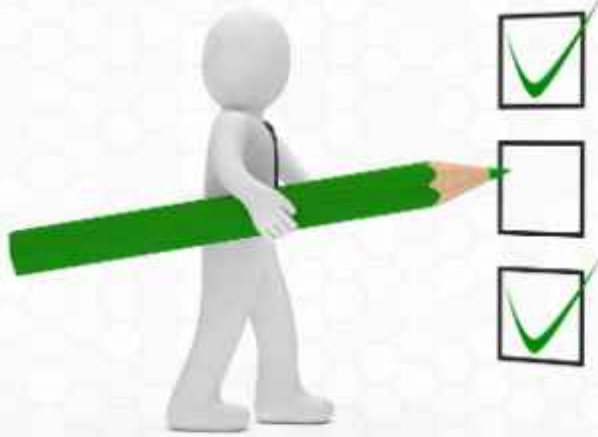
## INVITATION FOR FINAL PLACEMENT DRIVE, 2024-2026

### PUNE BUSINESS SCHOOL RANKED 1<sup>st</sup> AMONG INDIA'S EMERGING BUSINESS SCHOOL



#### OUR FEW ESTEEMED RECRUITERS





# ADMISSION PROCESS

Post Graduate Diploma in Management (**PGDM**) is the flagship program of Pune Business School. The two-year full-time course has an intake of 120 Students. The program is approved and accredited by AICTE in India. PGDM is a postgraduate course that includes the intricacies of business management study.



## Admission Process of PGDM batch 2025-2027

### ELIGIBILITY FOR PGDM

Admission to PGDM course shall be made only from the candidates qualified from any one of the six all India tests, ie: CAT/XAT/MAT/CMAT/ATMA/GMAT or the common entrance examinations (if any) conducted by the respective state governments.

The selection shall be based on overall rank computed taking into account further components with the following weights.

Score in the Common Admission test 50%.

Score in academic performance of X,XII standards, with clear consistency and UG performance with the weight of 15%.

GD/PI- 25%.

Extra-curricular, sports, social work, Academic diversity, Gender Diversity etc with 10%.

### Fee Structure General PGDM - Payment Schedule

Sr.No.	Specialization	Year	Particular	Total Fees
01	General Business Management	I <sup>st</sup> PGDM	Tuition Fees – Rs. 3,50,000/-	Rs. 3,50,000/-
		II <sup>nd</sup> PGDM	Tuition Fees – Rs. 3,00,000/-	Rs. 3,00,000/-
<b>Grand Total</b>				<b>Rs. 6,50,000/-</b>

### Fee Structure Agriculture PGDM - Payment Schedule

Sr.No.	Specialization	Year	Particular	Total Fees
01	Agri Business Management	I <sup>st</sup> PGDM	Tuition Fees – Rs. 2,90,000/-	Rs. 2,90,000/-
		II <sup>nd</sup> PGDM	Tuition Fees – Rs. 2,75,000/-	Rs. 2,75,000/-
<b>Grand Total</b>				<b>Rs. 5,65,000/-</b>

Note : **FOR FOREIGN STUDY TOUR PROGRAM**, The cost of travel and course fees and other related expenses would be borne by the students who intend to go at actual cost

## STUDENT COMMITTEES

Being a student-managed and student-run institute, all key functions of the institute are ably supported by committed student bodies under faculty guidance be it admissions, placements, web management or branding. Below is the list of all committees and clubs:

Admissions Committee

Alumni Committee

Competition Committee

Student Life Committee

Students Leadership Committee

Analytics Committee

Branding & Public Relations Committee

Innovation and Entrepreneurship Committee

Events Committee

Finance Committee

Food Committee

Green Committee

Yoga Committee

Marketing Committee

HR Committee

Placement Committee

Sports committee

Student Academic Committee

Management Consulting Committee

## STUDENT COUNCIL

We are a student-driven institute, where students are encouraged to participate in the decision-making process that shapes their future as well as that of the institute. Our Students' Council is the student body responsible and accountable for all activities conducted on campus throughout the year. The teams consist of students from the first and second year led by coordinators. These coordinators, along with the President of the Students' Council, form an executive body to oversee all activities. The teams work in the interest of the institute, the student community, industry and alumni in keeping the vision of the institute and striving towards excellence. The executive council is provided the independence to plan and set goals for their respective teams. The Director and Faculty Chairperson offer their guidance and support.



## STUDENT INITIATIVES AND STUDENT CLUBS

Moving in several directions at different speeds, often simultaneously, we evince the ability to excel at multi-faceted interests. The various Student-run clubs and committees demonstrate the holistic development of the students and enhance the overall diversity at our campus.



**Our student clubs encourage diverse interests and active participation. They help students grow holistically and contribute to a vibrant campus environment.**

- Culture Club
- Sports Club
- Entrepreneurship Club
- Media Club
- Pro Smart Club
- Finance Club
- Literature & Art Club
- We Club (HR Club)
- Mindfulness Club (For Mental Wellbeing)

# Life @ PBS





## NATIONAL HR EXCELLENCE AWARDS 2022

# Awarding the best in the field of human resources

Recently PCET's Pune Business School (PBS) organised the PBS National HR Excellence 2022 Awards ceremony at a city-based hotel. The awards were distributed by Chandrakant Patil, minister of higher & technical education, Maharashtra, and the guardian minister of Pune.

Present along with him were the institute's president Dyaneshwar Landge, vice-president Padma Bhosle, secretary Vitthal Kalbhor, treasurer Shantaram Garade, trustee Harshvardhan Patil and executive

director Dr Girish Desai. Also seen were Dr Parag Kalkar, head of the commerce department at the Savitribai Phule Pune University (SPPU) and Mukesh Malhotra, executive director of a city-headquartered brand.

At the event, Chandrakant Patil emphasised on the importance of HR as the link between an organisation and its employees. He added, "There is need to pay attention to the development of the industrial sector as well as research and patents. HR

experts should convey their suggestions and issues to the state government." Harshvardhan Patil expressed his happiness over the state government announcing the self-financing approved university status for the institute.

The HR Excellence Awards received an overwhelming response and over 500 entries from all over the country. The jury panel consisted of eminent personalities from the field and the event was hosted by Dr Minakshi Tyagi, dean - corporate



Awardees and dignitaries at the event

relations at the institute, under the guidance of Dr Ganesh Rao, director of PBS, and moderator Dr Manju Punia Chopra.

From HR Lifetime Achiever and Young HR Talent, to Talent Acquisition, Innovative learning and development in HR Operations, Employee Relations and more, many awards were given to deserving candidates. Special awards were given to people with major disabilities who are beating the odds and achieving success, under the Unsung Heroes category.

## HR MEET AT PBS



# INDUSTRY VISIT



Industry Visit To Jaguar Land Rover



Industry Visit To Mapro Foods Pvt. Ltd



Industrial Visit To Thyssenkrupp



Industrial Visit To Sula Wine



**Industry Visit to Milk Animal Breed Conservation & Dairy Department, College of Agricultural**



**Industrial Visit at chowgule shipping yards Goa**



Agri Business Management Event



### Convocation Ceremony

# INFRASTRUCTURE



**Classrooms**



**Hostel Facility**



**Library**



**Cafeteria & Mess**



**Auditorium**



**Sports & Recreational Facilities**



**IT Infrastructure & Resources**





**Library**



**Medical Room**



**Cafeteria**



**Canteen**



**Sports Ground**

## Fun-Filled Events at PBS



Fresher Party



Shivaji Jayanti



**Outbound Activity**



**Shivaji Jayanti**



**Dandiya Night**



**Bollywood Theme**



**Fresher Party**



**Guru Purnima**



**Independence Day**





PBS Sport Activity



Convocation Ceremony

## FACULTY



**Dr. Minakshi Tyagi**  
Dean - Pune Business School



**Prof. Vibhuti Dubey**



**Dr. Kiran Patil**



**Mr. SAGAR LOKHANDE**



**Prof. Prajakta Sandhikar**



**Prof. Puja Manake**



**Prof. Natansh Dubey**



**Ms. Shruti Tyagi**



**Prof. Vaishali Desoria**



**Mr. Smarjeet Das**

## Corporate Faculty



**Mrs . Fatema Tinwala**



**Mr. Jeetendra Sharma**



**CA Piyush Nathani**



**Dr. D N Itkyaal**



**Ms. Uma Dabir**



**Dr. Arpana Basnet**



**Dr. Huma Lone**



**Mr. Neeraj Athavale**



**Dr. Arathi Purohit**



**Dr. Girish Phatak**



**Mr. Shivshankar Vijapur**



**Mr. Rohit Ghosh**



**Mr. Priyanka Dasgupta**



**Mr. Deepak Toshniwal**



**Dr. Deepali Tambe**



**Ms. Trupti Jadhav**



**Ms. Preeti Ahuja**



**Mr. Rohit Kalamkar**



**Mr. Sumit Waware**



**Dr. Viraj Atre**

## Team PBS



**Mr. Ravikant B Yerulkar**  
O.S. Cum Accountant



**Mr. Harshad Kalbhor**  
Account Assistant



**Ms. Sheetal Hadge**  
Graphic Designer & Video Editor



**Ms. Mounita Choudhary**  
Academic Coordinator



**Ms. Nelta Ahmad**  
Academic Coordinator



**Ms. Dhanashree Sonawane**  
Placement Assistant



**Ms. Shweta Patil Patil**  
Examination Assistant



**Ms. Priya Bawne**  
Student Relationship Officer



**Ms. Aparna Dhage**  
Admission Counsellor



**Ms. Gauravi Desane**  
Admission Counsellor



**Ms. Abhilasha Rapte**  
Admission Counsellor



**Ms. Nikita Bharade**  
Admission Counsellor



**Mr. Machhindra Lantge**



**Mr. Tejas Garade**



**Mr. Prasad Kulkarni**



Sector No. 26, Pradhikaran Nigdi, Pune - 411 044.  
+91 88550 46617 | +91 91564 23225 | +91 88550 88523 (ABM)  
info@punebusinessschool.com www.punebusinessschool.com



**DI NO : ADM/DI/06**

## APPLICATION 2026-2028

Post Graduate Diploma in Management (PGDM)  
(Approved by AICTE New Delhi)

Entrance Exam Details	
CAT _____	Score _____
MAT _____	Score _____
OTHER _____	Score _____

SL. No.

Please Affix your  
Recent Passport  
Size Photograph

1) Personal Details

2) Date of Birth

DD  MM  YY

3) Current Address

City

Pin Code

State

Applicant's Mobile

Email

4) Permanent Address

Three rows of 16 empty rectangular boxes each for entering a permanent address.

City

16 empty rectangular boxes for entering a city name.

Pin Code

6 empty rectangular boxes for entering a pin code.

State

28 empty rectangular boxes for entering a state name.

5) Fathers Name

Two rows of 16 empty rectangular boxes each for entering a father's name.

Father's Profession

16 empty rectangular boxes for entering a father's profession.

6) Mother's Name

Two rows of 16 empty rectangular boxes each for entering a mother's name.

Mother's Profession

16 empty rectangular boxes for entering a mother's profession.

Father's /Mother's Mobile

10 empty rectangular boxes for entering a mobile number.

**ACADEMIC QUALIFICATION**

Sr.No.	Degree/ Certificate	Board/ University	College Name	Specialization	Year of Passing	Grade/ Percentage
1	10th					
2	10+2					
3	10+2+3 Bachelor's Degree* (Specify)					
4	Post Graduate** (Specify)					
5	Any Other (Specify)					

\*Select relevant one for Post Graduate Degree

**Note :**

- A) OVERALL PERCENTAGE OF MARKS MUST INCLUDE ALL SUBJECTS.
- B) If you are awarded a grade point please convert them into percentage of marks and indicate.
- C) If there is a formula given by University for conversion it may please be stated.
- D) If you are a rank, holder, indicate the same with class awarded.
- E) If yet to be completed please give us the details of your present status and percentage /grade second till your last semester /year.



## How to Reach

### PBS CAMPUS



**Akurdi Campus**

- ↖ Akurdi Railway Station: 1 KM
- ↖ Bus Stand: 1.5 KM
- ↖ Mumbai Pune Highway: 2 KM
- ↖ Hinjewadi IT Park : 12 KM
- ↖ MIDC & IT Hubs : 6 KM
- ↖ Pune Airport : 22 KM
- ↖ Pune City : 10 KM
- ↖ Mumbai : 130 KM



PCET'S  
**PBS** PUNE BUSINESS SCHOOL  
 IGNITING MINDS

Pimpri Chinchwad Education Trust's  
**PUNE BUSINESS SCHOOL**

Sector No. 26, Pradhikaran  
 Nigdi, Pune - 411 044.

+91 73853 33624 / 73853 33766 /  
 8855088523 (For Agri Business Management)  
 +91 9011627788 (Training & Placement Cell)

info@punebusinessschool.com  
 www.PuneBusinessSchool.com

