



SHRI RAM COLLEGE OF COMMERCE  
Global Business Operations

**2025**

**FINAL  
PLACEMENT  
REPORT**

**PGDGBO**

[www.srccgbo.edu.in](http://www.srccgbo.edu.in)



## OUR HISTORY

2

Established in 1926, Shri Ram College of Commerce has always been home to some of the finest talents of the country. It has been an innovator in higher education with philanthropy at its heart and promoting a global vision embracing the growing needs of the business world. Today, that trailblazing spirit makes SRCC one of the most prominent and respected colleges globally, featuring top ranked academic programs. With the spirit of innovation, 26 years ago, SRCC launched its flagship Management course 'Post Graduation Diploma in Global Business Operations' which focuses on empowering individuals to challenge conventional thinking in the business world. The Management Program offers an enriching global perspective of businesses where a multidimensional approach is necessary. The interdisciplinary core curriculum enables students to learn in the domains of Analytics, Finance, Human Resources, Marketing, Strategy and Operations and become the next generation of leaders in academia and business.



## FOUNDER OF THE COLLEGE

Sir Shri Ram was born on April 27, 1884. First son of Madan Mohan Lal and Chando Devi, Shri Ram completed his school and college education in Delhi and joined the family business DCM in 1900. In 1920 he established the Commercial Education Trust to promote business education and in 1926 the Commercial College came into being. On its silver jubilee in 1951, the college was renamed after the founder as Shri Ram College of Commerce. SRCC remains an institution founded with a vision of fostering meaningful education in the fields of business and economics.

Warm Greetings from Shri Ram College of Commerce!

Launched in 1999, the Two-Year Post Graduate Diploma in Global Business Operations (GBO) reflects SRCC's vision as "A College of Global Choice." In today's interconnected world, the programme offers a rigorous academic foundation fused with real-world industry exposure-essential to thrive in global business environments. Over four semesters, students engage with advanced subjects such as International Economics, Trade Law, Strategy and Transnational Marketing, taught by expert faculty and industry professionals. A dynamic interface with the industry through internships, lectures and workshops further enhances learning.

A hallmark of GBO is its diverse batch, selected from varied academic backgrounds through a competitive process. This fosters a culture of collaboration, leadership and holistic development. The programme's excellence is evident in its strong placement track record and a thriving alumni network shaping global enterprises. As GBO marks its Silver Jubilee, it stands as a testament to SRCC's commitment to global business education.

We welcome you to this transformative journey of growth and leadership.



**Prof. Simrit Kaur**

It's my absolute pleasure to welcome you to the Global Business Operations (GBO) programme at SRCC, a platform designed to prepare young, bright future managers for today's dynamic and interconnected world.

The GBO programme embodies our commitment to fostering a global mindset, equipping students with cutting-edge tools, methodologies, and industry-relevant practices. With a strong foundation in global trade, business principles, and experiential learning through case studies, simulations, and live projects, the curriculum bridges the gap between classroom concepts and real-world applications.

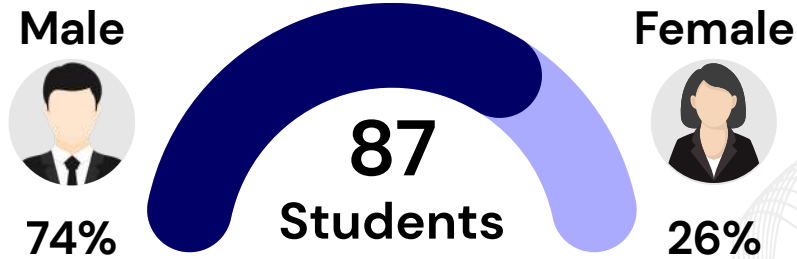
Our distinguished faculty, supported by corporate expertise, ensures a practical perspective, while regular sessions with international speakers offer valuable global exposure. Value-added courses in Data Analytics, AI, and Communication Skills further shape well-rounded, industry-ready professionals.

With a proven record in placements and internships and the support of a strong alumni network, SRCC GBO provides an exceptional launchpad for aspiring managers. We invite you to join this transformative journey and be a part of shaping the next generation of global business leaders.

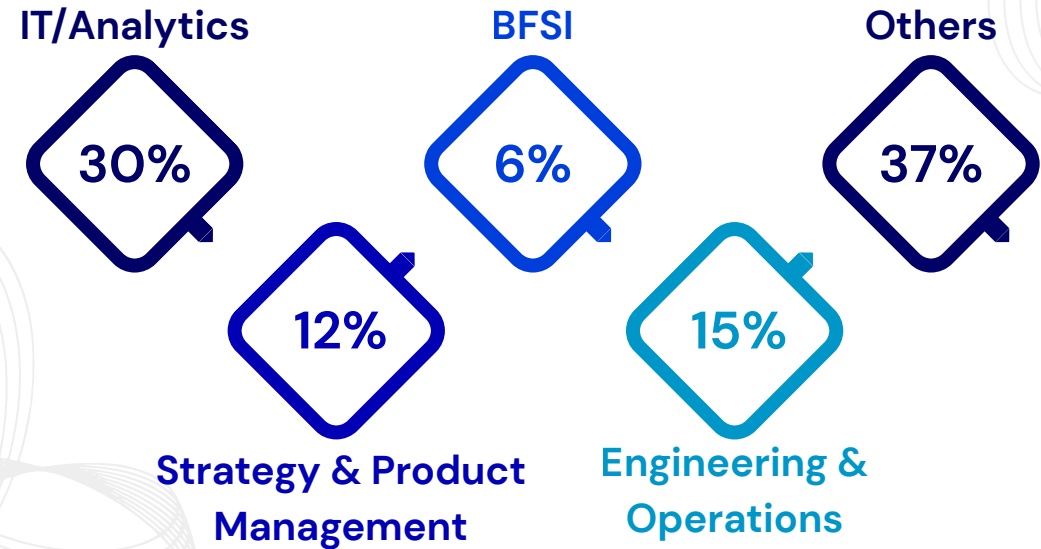


**Dr. Misha Govil**

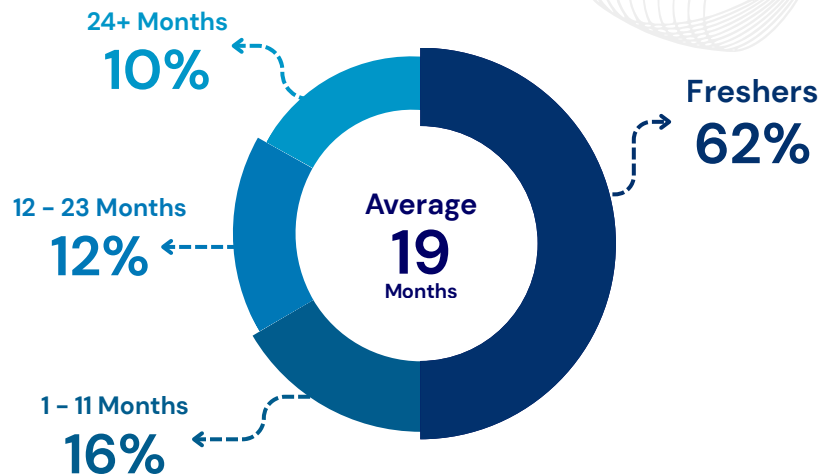
### Batch Diversity



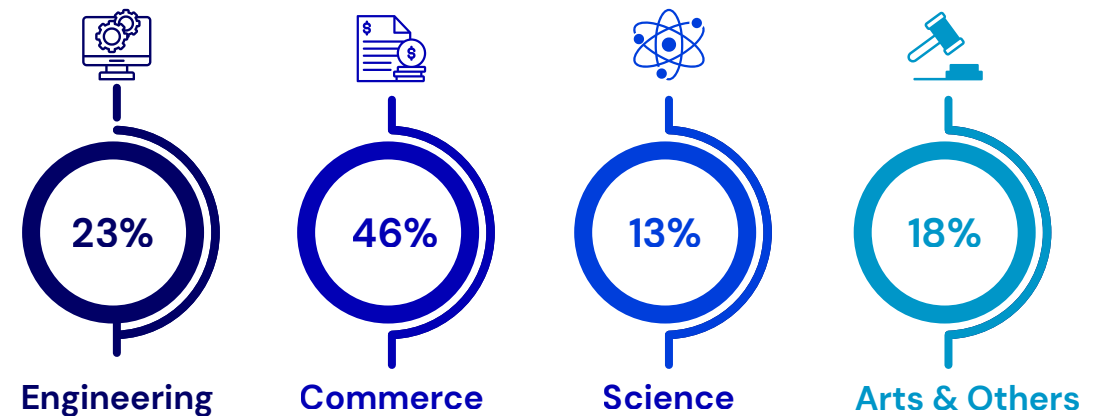
### Domain Wise Experience



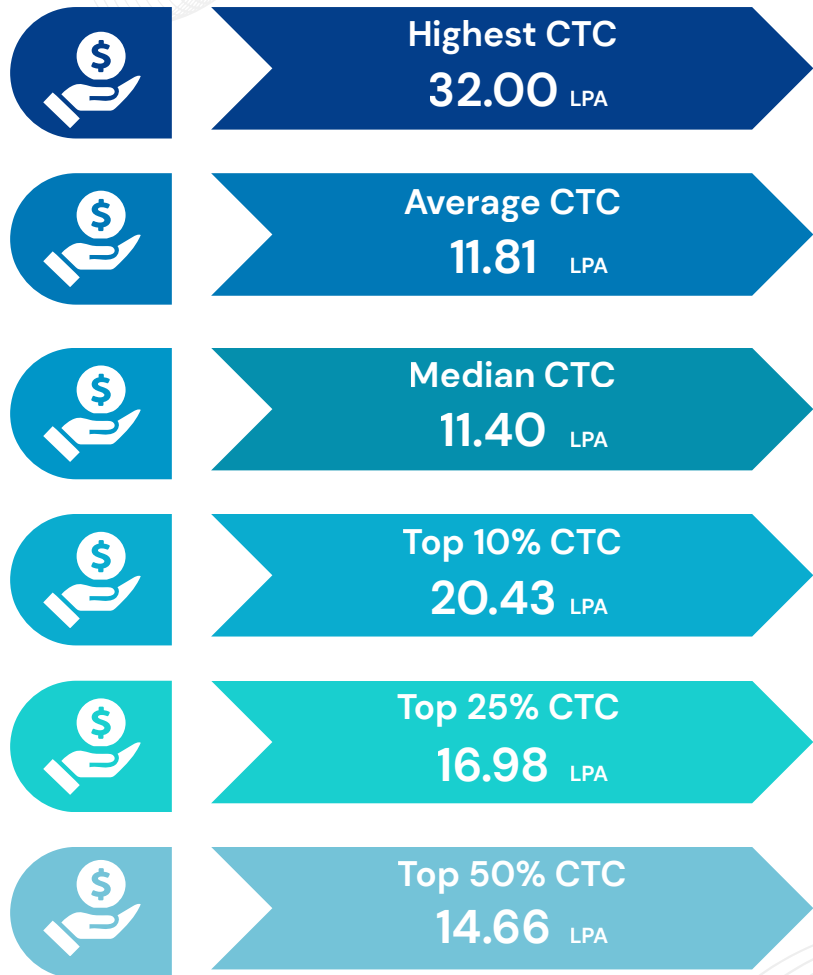
### Work Experience



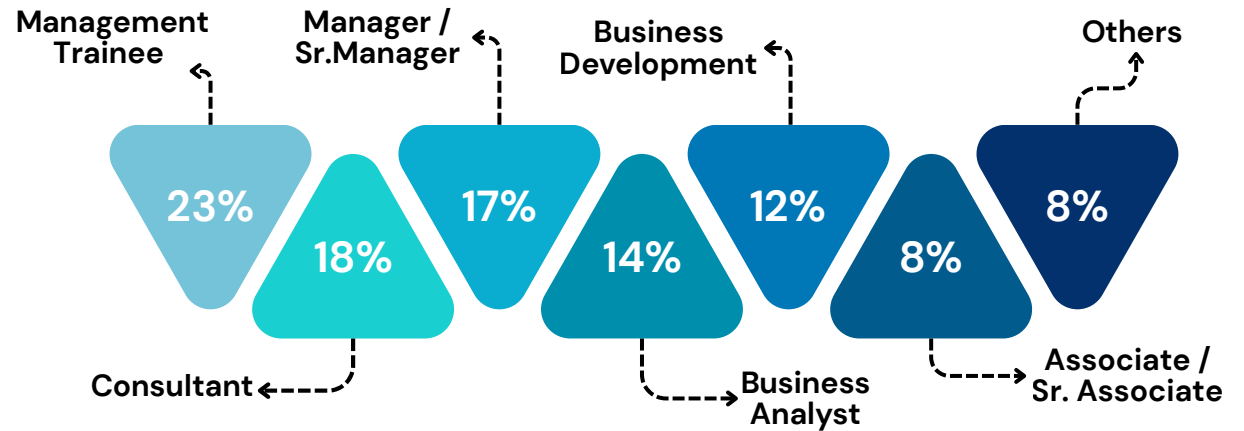
### Educational Background



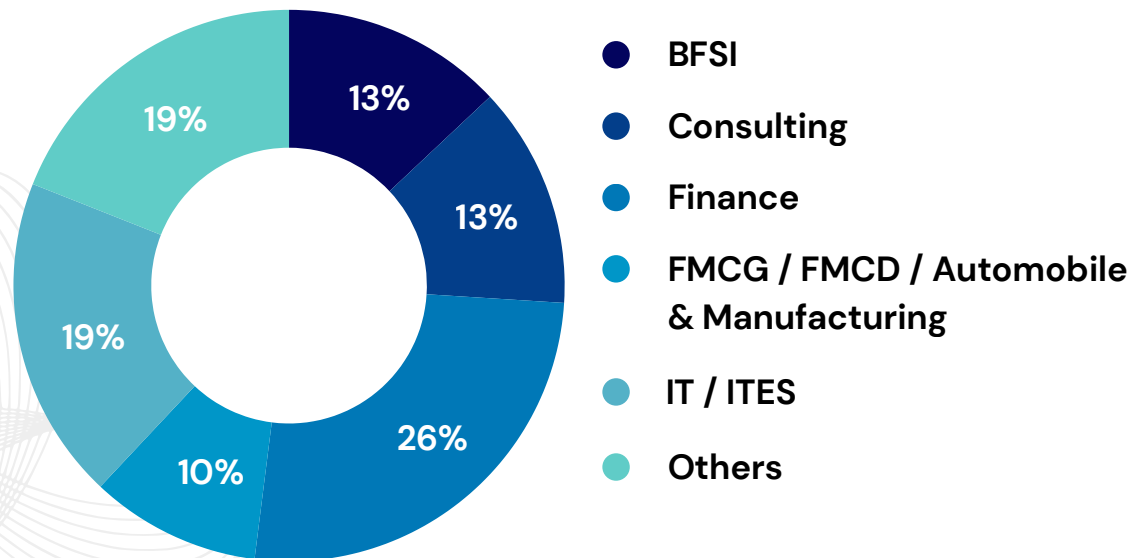
## Placement Statistics



## Profiles Offered in Placements



## Sector Wise Distribution

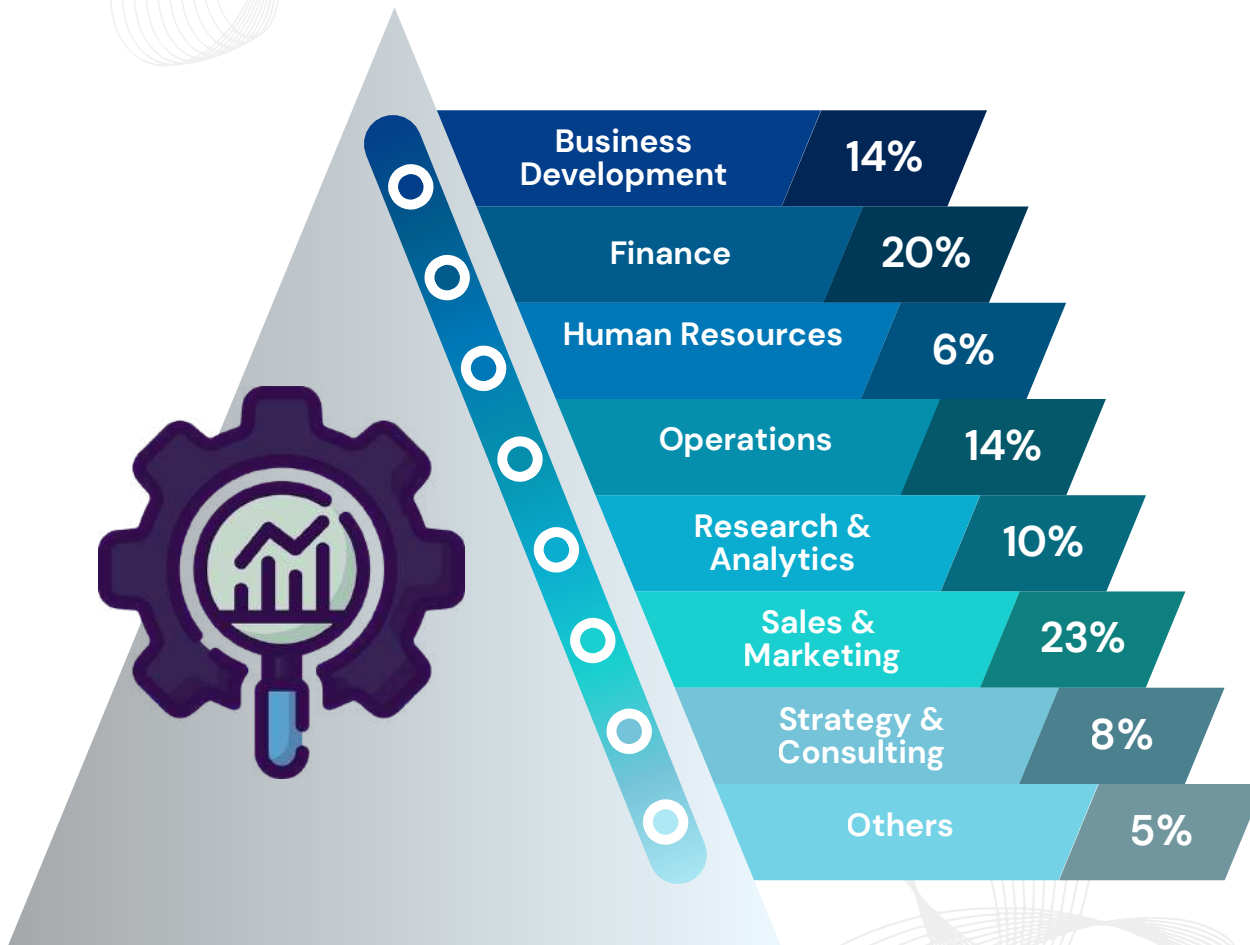




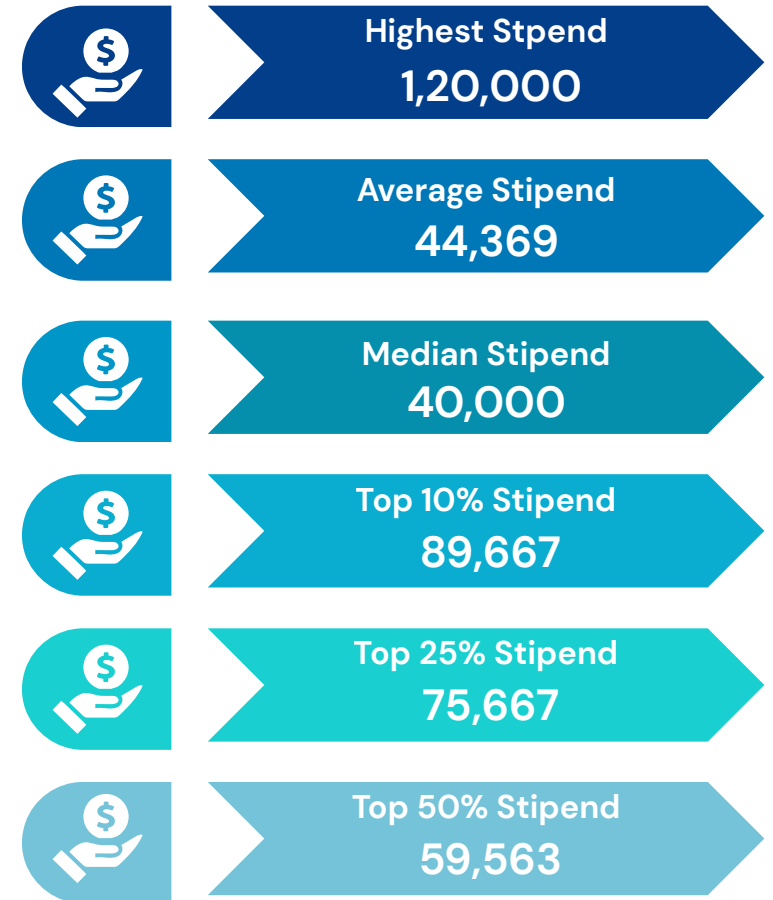
# 20+

## NEW RECRUITERS ONBOARDED

## Domain Wise Distribution



## Internship Statistics



# PROMINENT ASSOCIATIONS

8

accenture

adani



Adobe



अमर उजाला amazon

AMERICAN EXPRESS

arthan FINANCE



AVALON GLOBAL RESEARCH



AXTRIA  
INGENIOUS INSIGHTS



BAJAJ FINSERV

CAMBRIDGE UNIVERSITY PRESS & ASSESSMENT



CBRE cogoport

Collabera  
Value. Accelerated.

comviva



cvent

DARASHAW



DE Shaw & Co



Deloitte.

digit

droom

EgonZehnder

EY

FIITJEE



Gartner



Grant Thornton

GRIP

HCLTech



HEALTHKART



ICICI Bank



Infosys

# PROMINENT ASSOCIATIONS

9

jaro education						KANTAR	KKR
							Michael Page
MOODY'S				Optum			plum
							SONY
SpencerStuart						Tech Mahindra	
				WAVE Infratech		WNS	Z-First

# CORPORATE RELATIONS AND PLACEMENT CELL TEAM

10



**DR. MISHA GOVIL**  
Course Coordinator  
+91 9350244448



**Abhay Badola**  
+91 9518068562



**Anjali Daga**  
+91 7042127808



**Ankita Pandey**  
+91 8765396568



**Humanshi Jharbade**  
+91 9589217849



**Naman Rukhaiyar**  
+91 9835759569



**Nishil Hedao**  
+91 9869261350



**Vaibhav Vashisth**  
+91 7217808851



**Yash Shukla**  
+91 9598204421

\* Student-led body responsible for coordinating recruitment and placement activities on campus.



**Global Business Operations**  
**SHRI RAM COLLEGE OF COMMERCE**  
University of Delhi  
Maurice Nagar, Delhi-110007

 [placementcell.gbo@srcc.du.ac.in](mailto:placementcell.gbo@srcc.du.ac.in)

 [www.srccgbo.edu.in](http://www.srccgbo.edu.in)

 [linkedin.com/in/srcc-gbo-corporate-relations-and-placement-cell](https://www.linkedin.com/in/srcc-gbo-corporate-relations-and-placement-cell)